

TROUBLESHOOTER / FOR DUAL FLUSH MECHANISM

PROBLEMS

CAUSE OF THE PROBLEM

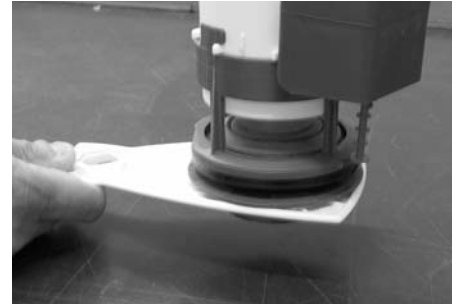
SOLUTION(S)

WATER LEAKS ON THE FLOOR

The base nut is not screwed sufficiently :

Re-tighten the base nut.

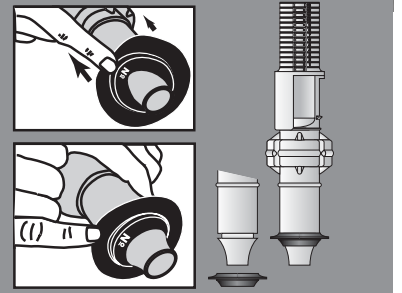
IMPORTANT !
Message to the installer :
 Please keep this trouble shooter in a safe place - For the attention of the end user or owner of this toilet cistern.



Ref : A10385 03/2005

The washer is not correctly positioned on the tube :

Position it correctly.

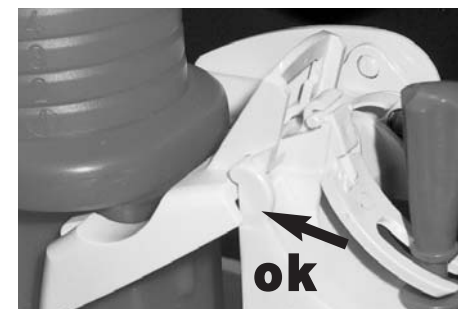
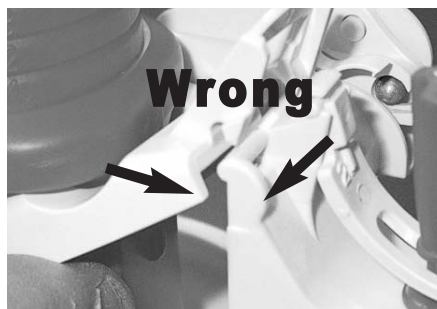


! Bleach added not recommended ...
 Wirquin strongly recommends that NO strong chemical additives are added in your cistern. This may affect the performance of the washers and will cancel our product guarantee.

WATER LEAKS IN THE PAN OR THE FULL FLUSH DOES NOT WORK

The " fork " support is not correctly clipped into the 2 notches :

Clip it correctly.



WATER LEAKS IN THE PAN

The overflow remains in high position because the small plastic flap is badly positioned

Position it correctly

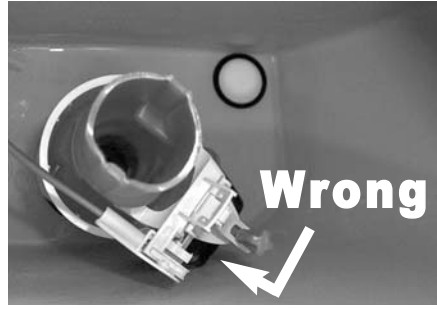


PROBLEMS

**ONLY THE HALF FLUSH IS ACTIVATED,
THE FULL FLUSH DOES NOT WORK**

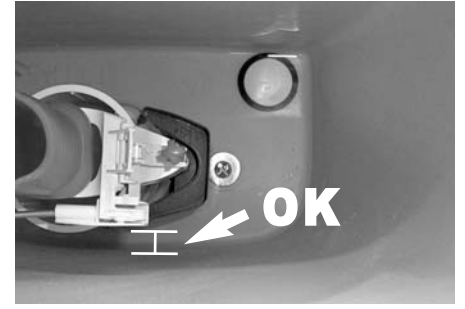
CAUSE OF THE PROBLEM

The ball float should not touch the cistern wall :



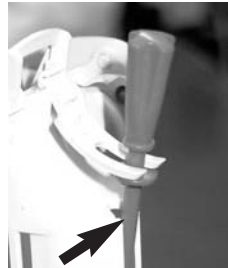
SOLUTION(S)

Unclip the mechanism body and reposition it making a 1/4 turn

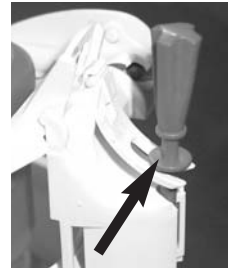


THE FULL FLUSH DOES NOT WORK

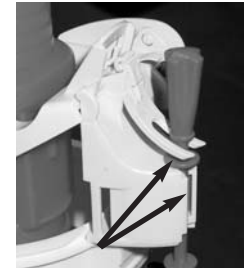
The red screw is not correctly clipped



The small fork is not correctly positioned



Clip and position the red screw correctly

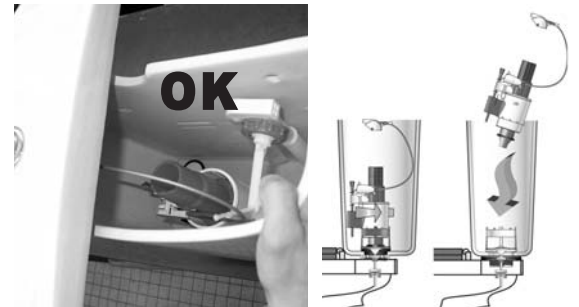


**YOU NEED TO GET INTO THE CISTERN
(DAMAGED CABLE, FAULTY WASHER...)**

To get into the cistern, do not turn the lid upside-down or pull the cable :



Proceed as follows : just move the lid to one side.



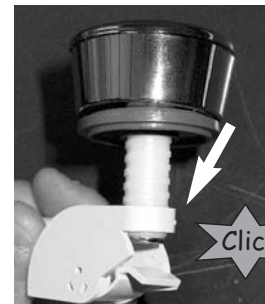
THE PUSH BUTTON REMAINS IN THE "PUSH POSITION" WHETHER HALF-FLUSH OR FULL-FLUSH.



The cable control is wrongly clipped onto the threaded base of the push button :



The cable control should be clipped correctly onto the push button base.



You should be able to twist the push button around easily in the control

The push button nut is screwed too tightly :



Only manual screwing !!!

REFERENCES

Dual push button : 8089
Dual flush grey cable : P50248
Black overflow washer : 2355

! Do not use " anti-limescale " cleaning products to clean the button : it could damage the chrome plated area

WIRQUIN